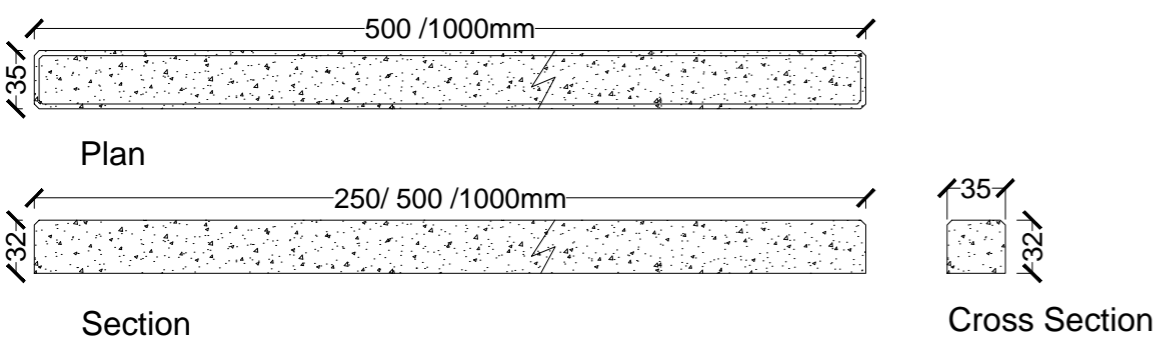


**PAVING PATTERN RATIO:**  
 Precast RC Strip Inset : Exposed Steel grating  
 85% : 15%

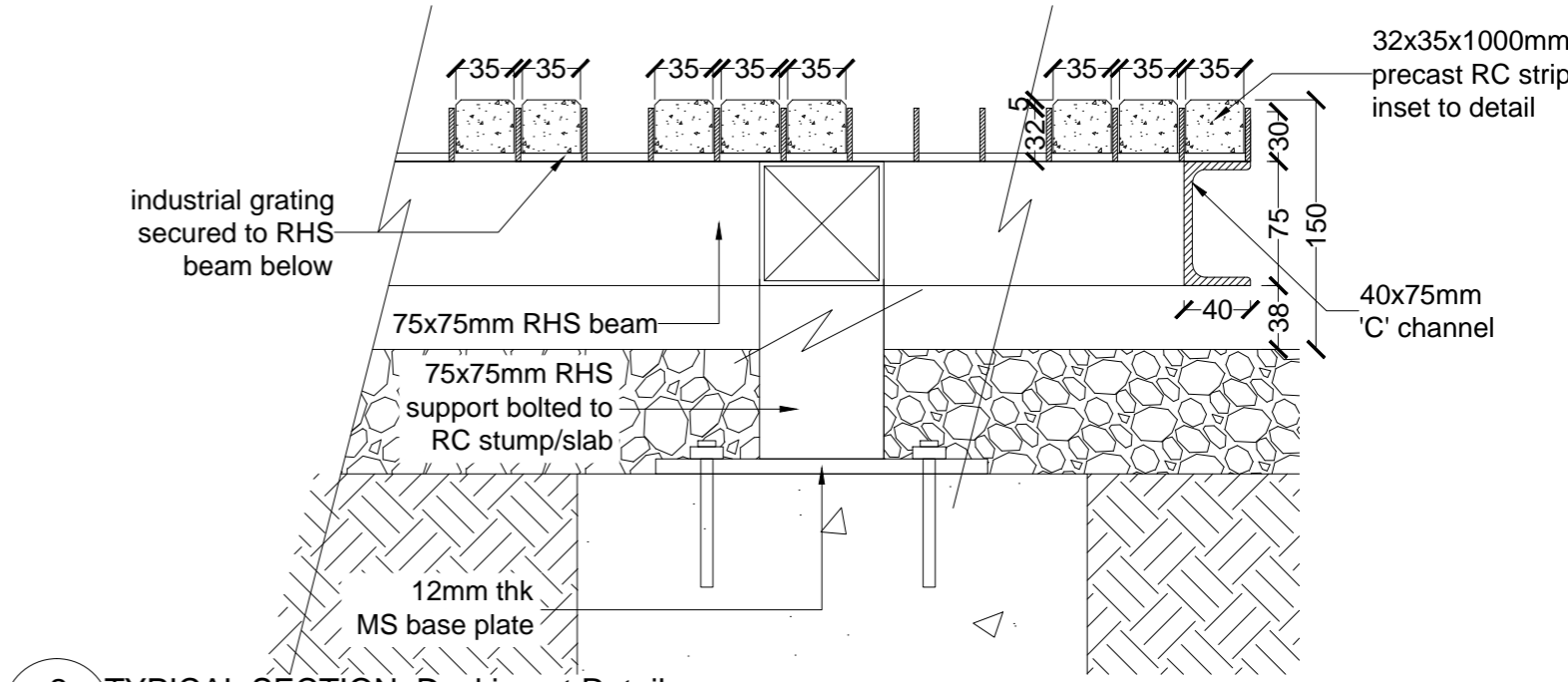
- STEEL GRATING NOTE:**
1. All steel grating to be Webforge Mild Steel Grating or similar approved ; w/ hotdipped galvanised finish Type: WA323/2 Product Code: C323M, Cross Rod Pitch 100mm, Load Bar Size 32x3mm
  2. All RHS beam & columns to be 75x75x3mm thk .
  3. All MS 'C' channel frame to be 40x75x5mm thk.
  4. All MS members to be hot dipped galvanised finish painted w/ 2 coats of Nippon Micaceous Iron Oxide colour : Dark Grey
  5. All screws, nuts and bolts to be stainless steel finish.

**TYPICAL LAYOUT: Courtyard Decking Paving Pattern**  
 Scale 1:40



**TYPICAL DETAIL: Precast RC Strip**  
 Scale 1:5

**NOTE:**  
 1. All Precast RC strip to be treated with otter water seal to manufacturer's specification.



**2 TYPICAL SECTION: Decking at Retail**  
 Scale 1:5