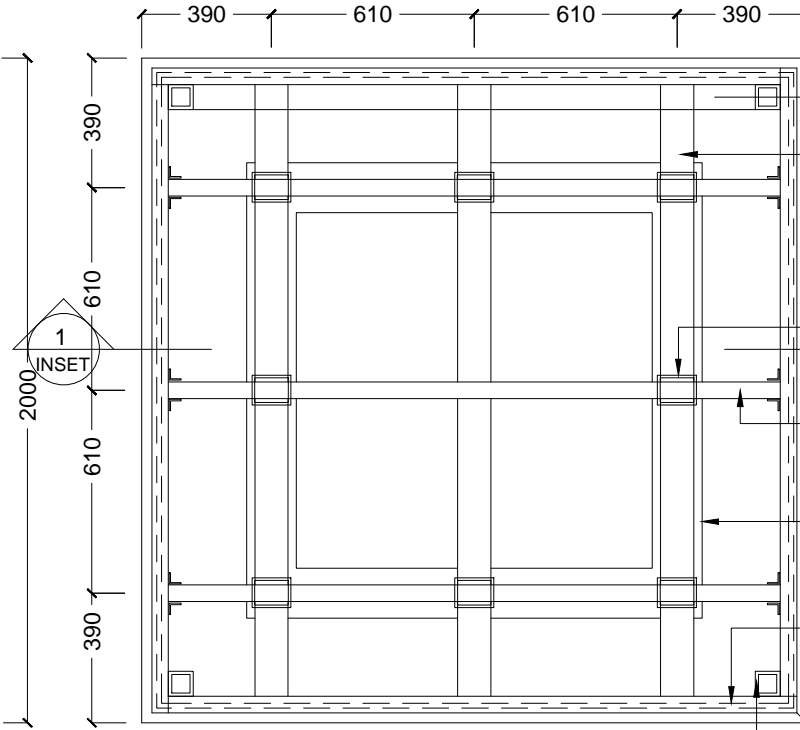


PLAN OF DAY BED

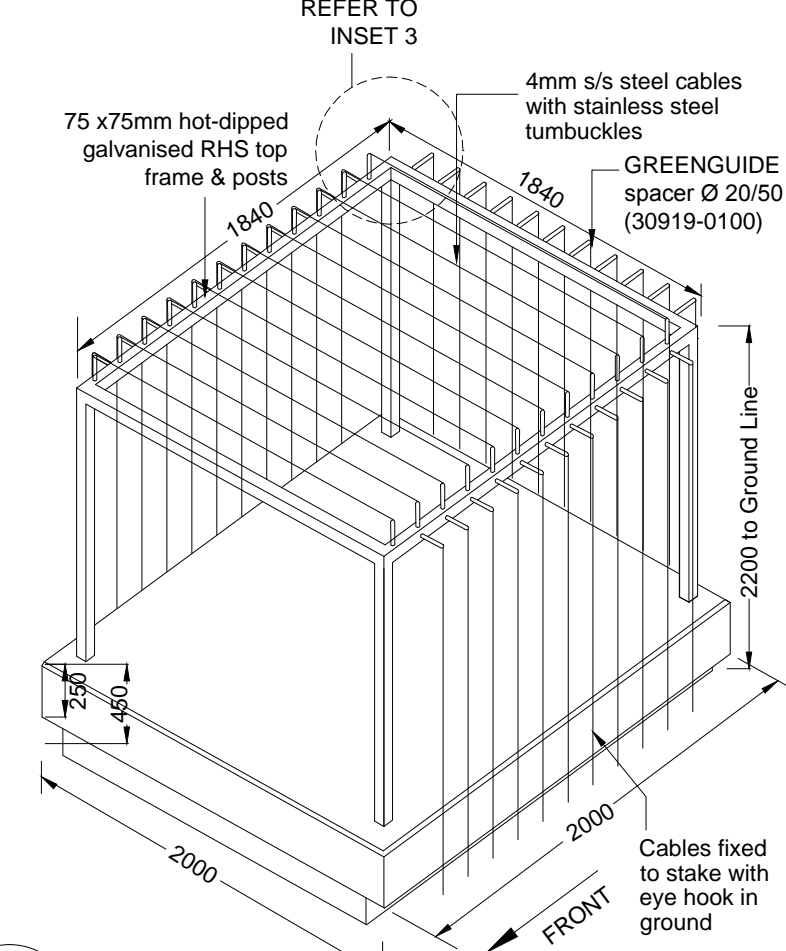
1:25



PLAN DETAIL: TIMBER FRAMING

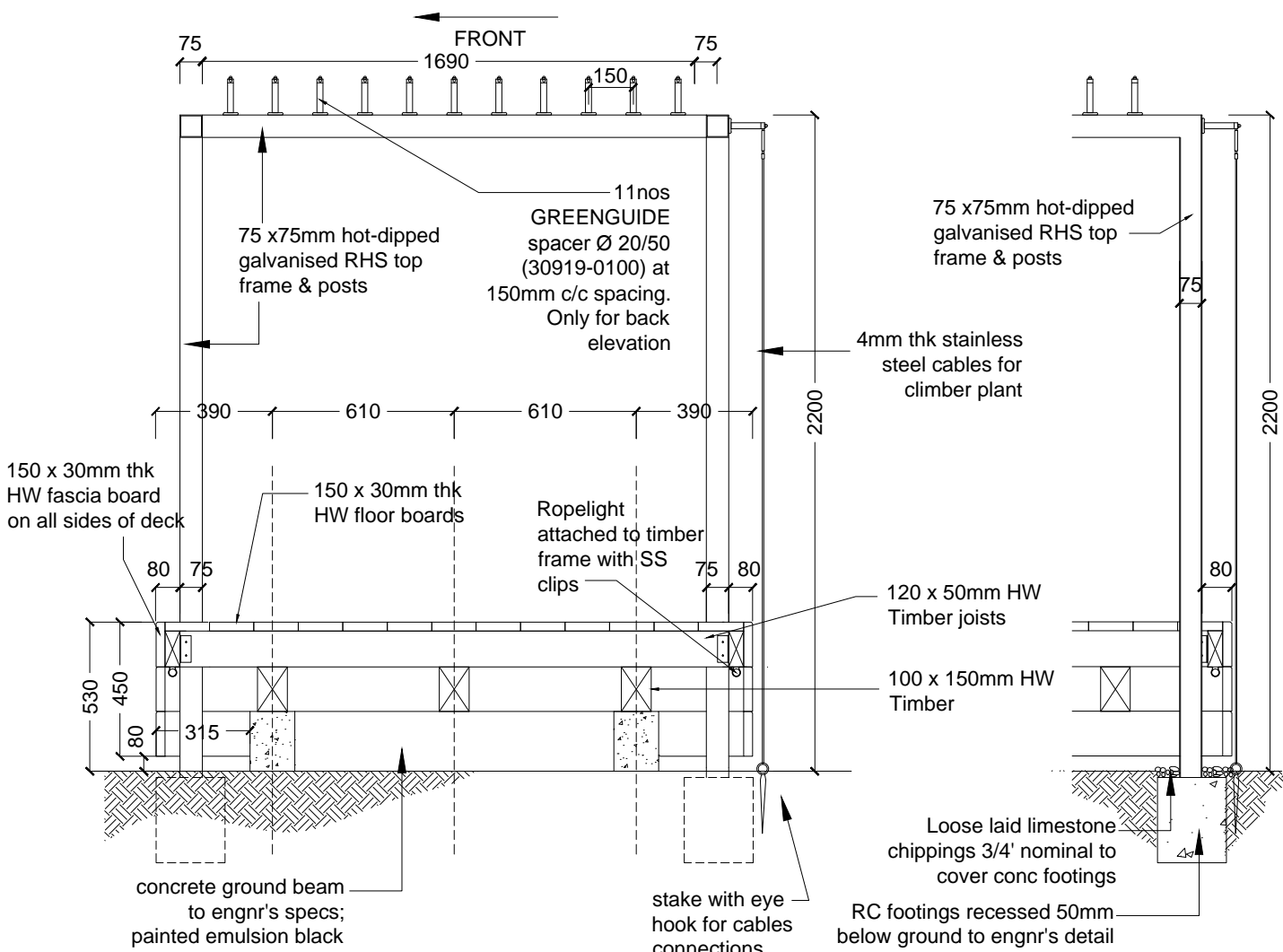
1:25

- 30mm thk HW timber (Grade A) fascia board; chamfered 5mm at top edges
- 100 x 150mm HW timber beam (Grade A) attach to ground beam w/ non-corrosive lag screws
- metal post anchor connecting HW timber beam to concrete footing
- 50 x 120mm HW timber joist (Grade A)
- concrete ground beam to engnr's specs; painted emulsion black
- ropelight loop attached below timber frame
- 75 x 75mm hot-dipped galvanised RHS post



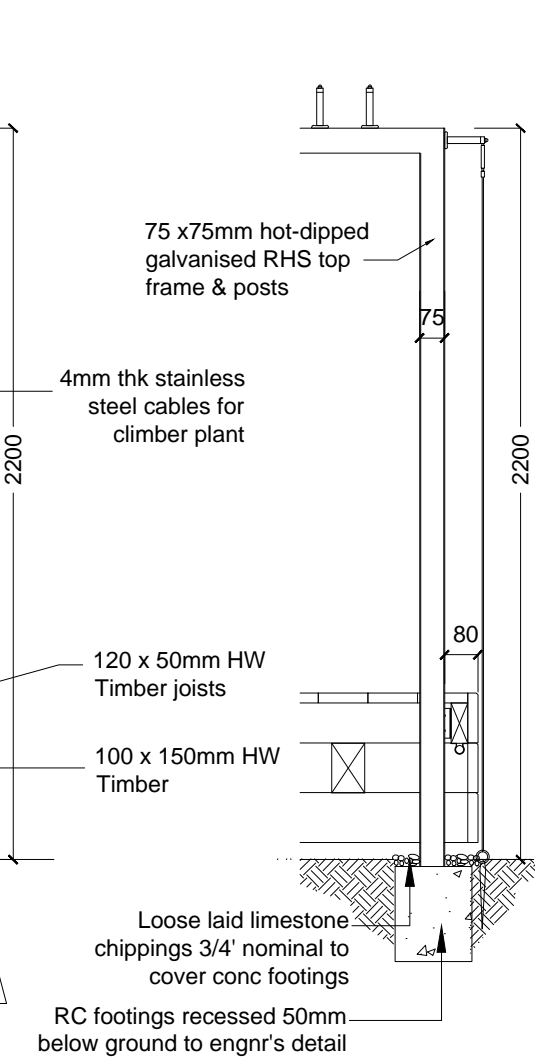
ISOMETRIC

1:50



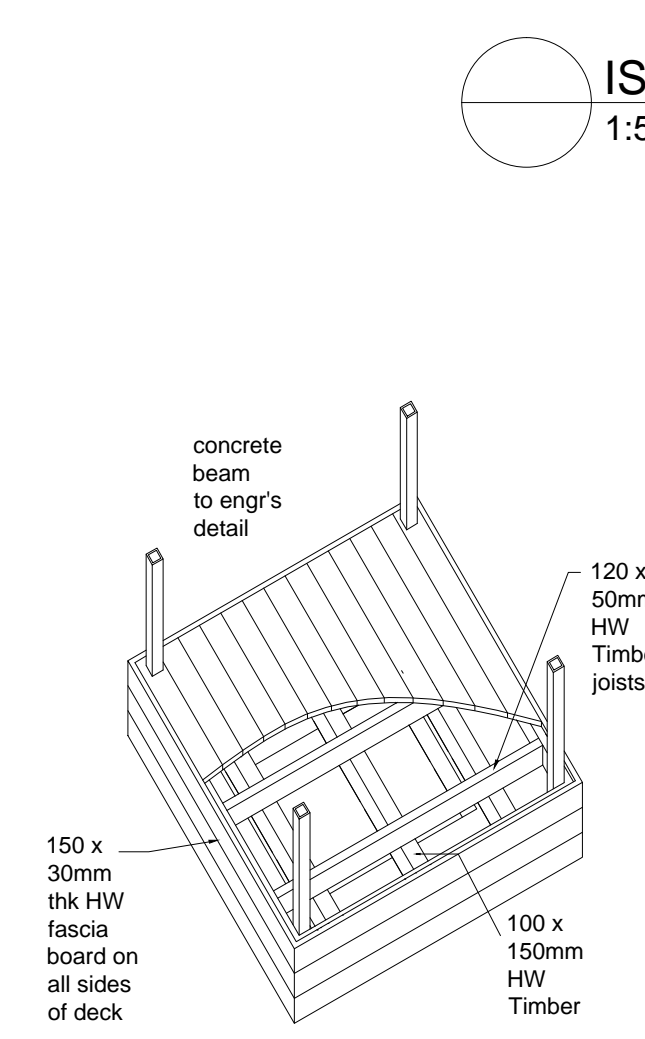
1 SECTION 1

INSET 1:25



2 SECTION 2

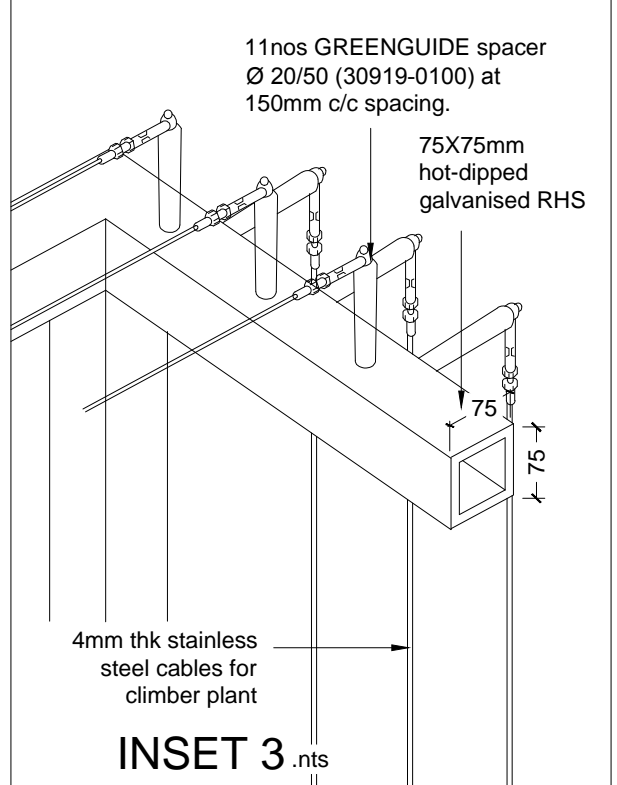
INSET 1:25



AXONOMETRIC

1:50

- IMPORTANT:**
1. All timber to be **TIMBER RITE WOOD** or equivalent **LOCAL TIMBER COMPOSITE** sample to be submitted to Landscape Architect for approval. In any condition where composite timber are not used, kindly substitute with **RESAK HW TIMBER, Grade A**. All timber to be painted with Thompson water seal strictly according to manufacturer's spec.
 2. All timber to be painted with Thompson water seal strictly according to manufacturer's spec.
 3. All steel screws and nuts to be hot-dipped galvanised.



INSET 3